

**THE FUTURE
OF PROFESSIONAL
ACHIEVEMENT**

中国·上海市普陀区金沙江路1678号6号楼501室(绿洲中环中心) 上海市嘉定区黄渡工业园春归路176号(工厂地址)

Add:5-501, Oasis Middle Ring Center, No.1678 Jinshajiang Road, PuTuo District, Shanghai 200333 P.R.China

Factory Add:176 Chungui Road Huangdu Industrial Park, Jiading Area Shanghai 201804 P.R.China

Services: 4008201358 | Tel: 86-21 61808099-806 | Fax: 86-21 62595096 | E-mail: roken@roken.com.cn | [Http://www.roken.com.cn](http://www.roken.com.cn)



Contents

2	公司简介及业务范围	Company Profile / Business Of ROKEN HYDRO-TECH
4	厂区简介/资质认证/合作伙伴	Factory Introduction / Qualification And Partners
6	RM RM-e RA型标准液压装置/德国DIN标准液压站	Standard Hydraulic Power Units Rm Rm-e Ra Pack / DIN Standard Hydraulic Power Units
8	RM RM-e RA Pack	RM RM-e RA PACK
10	比例液压系统/上海工程技术大学高频比例伺服系统	Proportional Hydraulic Systems / High-frequency Proportional Servo Systems
12	卡特比勒液压缸测试系统/上海重型机器厂扩管型机液压系统	Test Systems for Caterpillar Cylinder / Hydraulic systems for pipe expanding machine
14	高压气瓶流水线液压系统/开平机液压系统	Hydraulic stations for the production line of high-pressure steel bottle necking-in / Hydraulic stations for straightening machine
16	高压热压机液压系统/电子电路板压机液压站	Hydraulic stations for high-pressure hot press machine / Hydraulic stations for circuit board laminating machine
18	汽车行业液压系统/汽车行业配套液压站	Hydraulic system for automotive industry / Hydraulic station for automotive industry
20	港口机械-克令吊液压系统/高压水系统	Port machinery-- hydraulic systems for ship crane / High-pressure water systems
22	船舶液压站	Hydraulic station for shipping industry
24	船用液压系统/中船七一一研究所试验装置	Hydraulic system for shipping industry / Test devices for 711 Research Institute of CSIC
26	组合机床液压站/轮胎硫化机液压站	Hydraulic stations for combined machine tool / Hydraulic stations for tire vulcanizing machine
28	液压动力单元/SONY 配套液压站	Hydraulic power units / Hydraulic stations for SONY
30	液压测试装置/液压元件测试台	Hydraulic testing devices / Test bench of hydraulic components
32	冶金液压站	Hydraulic stations for metallurgical industry
34	环卫行业液压系统/中集配套液压站	Hydraulic systems for environmental sanitation industry / Hydraulic systems for CIMC (China International Marine Containers (Group) Ltd.)
36	新日本钢铁出口冶金液压系统 SPCO /3500吨全自动汽车薄板冲压生产线	SPCO metallurgical hydraulic systems exported to Nippon Steel Corporation / 3500 tons automatic press production lines for automobile sheet meta
38	保斯机器人液压系统/英格索兰测试系统	Hydraulic systems for REIS robot / Test systems for Ingersoll Rand
40	电器控制系统	Electrical control systems
42	液压缸	Hydraulic cylinder
44	液压集成阀组件	Hydraulic pile-up valve modules
46	中国南极科考队低温加油泵站和雪橇	Refueling pump stations under the low temperature and sledges for Chinese Antarctic Scientific Expedition
48	辅件	Accessories



ROKEN HYDRO-TECH 的业务：

- ▶ 液压系统的设计和制造
- ▶ 专用电器控制系统的设计和制造
- ▶ 液压缸、活塞式蓄能器的设计和制造
- ▶ 专用液压元件的制造和销售
- ▶ 进口液压和电子元件的销售
- ▶ 技术支持与产品销售服务
- ▶ 机械加工
- ▶ 钢结构件加工

Business of ROKEN HYDRO-TECH :

- ▶ Design and manufacturing of hydraulic systems
- ▶ Design and manufacturing of specialized electrical control systems
- ▶ Design and manufacturing of hydraulic cylinders and piston accumulators
- ▶ Manufacturing and sale of specialized hydraulic components
- ▶ Sale of imported hydraulic and electronic components
- ▶ Technical support and after-sale service
- ▶ Mechanical processing
- ▶ Processing of steel structural parts

上海柔肯液压科技有限公司 SHANGHAI ROKEN HYDRO-TECH CO.,LTD

Hydraulic pressure is the technology which generating applied force and movement through controlling liquid with the pressure. By right of extensive and professional experience in the domain of motion and control technologies, **ROKEN HYDRO-TECH** has provided customers innovative subassembly and system set and been the strategic partner for them in this field.

ROKEN HYDRO-TECH makes our every effort unremittingly to develop new product and create new thought, accumulates abundant knowledge and experience in the domain of motion and control technologies, so, **ROKEN** could provide customers reliable products, not only help you increasing output significantly, but also help you controlling the cost of production and management efficiently. **ROKEN** hope that we could explore the optimum technical solutions together with you, **ROKEN**, contributes to your success.

ROKEN HYDRO-TECH's business has involved into traditional industry, architecture, wind power generation, agriculture, environmental sanitation, metallurgy, mining industry and watercraft and so on, and also has a leading position in hydraulic technology concerned areas of wind power generation, plastics machinery, environmental sanitation machinery, mining machinery, machinery tool, metallurgical machinery and ship crane.

Besides, we also provide the convenient pre-sale and post-sale services. From traditional industry to moving machinery, from single unit to systematic solution, **ROKEN HYDRO-TECH** will be your true consultant and reliable partner in hydraulic product series.

ROKEN HYDRO-TECH is ISO 9001:2008 certified.

ROKEN HYDRO-TECH is the nominated OEM of hydraulic system of YUKEN Kogyo Co., Ltd and has manufactured power units of 200 kinds and more than 500 sets for YUKEN, and also is the distributor of YUKEN products.

ROKEN HYDRO-TECH is the nominated OEM of hydraulic oil tank of PARKR HANNIFIN Corporation.

ROKEN HYDRO-TECH is the authorized distributor of electronic products of IFM Electronic GmbH, Germany.

ROKEN HYDRO-TECH is the authorized distributor of rubber hoses of SUNFLEX, Italy.

ROKEN HYDRO-TECH is the authorized distributor of quick release couplings of DNP Industriale Srl, Italy.

液压是控制带有压力的液体来产生作用力和运动的技术。**ROKEN HYDRO-TECH**凭借在运动和控制技术领域广博的设计经验，为用户提供创新的组件和完整成套系统，是用户在该领域的最佳合作伙伴。**ROKEN HYDRO-TECH**与合作伙伴携手，不懈开发新的产品和新的思路，为客户提供可靠的产品，帮助他们提高生产效率和赢利能力。

ROKEN HYDRO-TECH在运动和控制领域积累了丰富的知识和经验，不仅能够助您显著增加产量，同时可以帮助您控制生产成本和管理成本。我们愿与您一起探索技术解决方案，助您铸就成功。

ROKEN HYDRO-TECH的市场包括传统工业、建筑、风力发电、农业、环卫、冶金、矿山和船舶等等，在风力发电、塑料机械、环卫机械、矿山机械、机床、冶金机械及船舶吊机方面的液压系统具有行业领先地位。我们为您提供快捷便利的售前和售后服务，从传统工业到行走机械，从单个元件到系统解决方案，**ROKEN HYDRO-TECH**是您在液压产品选择的忠实顾问和可靠伙伴。

ROKEN HYDRO-TECH是日本油研工业株式会社（YUKEN）液压系统的代工厂，已累计为YUKEN制作液压站100个品种300余台；是日本YUKEN产品的经销商；

ROKEN HYDRO-TECH是派克-汉尼芬公司（PARKER）液压油箱的代工厂，并成为PARKER公司的OEM(原始设备制造商)客户；

ROKEN HYDRO-TECH是德国易福门公司（IFM）电子产品授权代理商；

ROKEN HYDRO-TECH是意大利SUNFLEX橡胶软管产品授权代理商；

ROKEN HYDRO-TECH是意大利DNP液压快换接头产品授权代理商；



ROKEN HYDRO-TECH 厂区坐落于上海市汽车城产业园区内，G15（沈海）高速曹安公路(G312国道)出口处，距上海虹桥国际机场和高铁虹桥站15公里，交通便利。厂区拥有独立的生产车间和仓库，其中包括1600平方米钣金加工车间，900平方米的金加工及液压装配试验车间，以及500平方米仓库。

ROKEN HYDRO-TECH 的设备：拥有125T折弯机、8X2500剪板机、卷板机、进口数控等离子切割机、油箱喷沙设备、数控带锯床等钢板加工设备；交流氩焊机、直流氩焊机、氩弧焊机、气体保护焊机、等离子切割机、仿型切割机等离子切割设备；摇臂钻床、钻铣床、车床、数控机床和进口加工中心等机械加工设备；进口胶管压机、进口切管机等液压胶管总成加工设备；进口弯管机、切管机等钢管加工设备；液压清洗机、液压电气阀组试验台、检测仪器等液压系统检测设备。

ROKEN HYDRO-TECH 的人力资源：拥有液压高级工程师、结构工程师、液压系统匹配工程师、电路及软件编程工程师、高级技师技工等。

ROKEN HYDRO-TECH 的优势：

- ▶ 液压系统依照日本YUKEN标准、美国PARKER标准生产，精工细做，每款产品都是经典之作
- ▶ PARKER、YUKEN、REXROTH、ATOS等进口液压元件及液压辅件的库存备货
- ▶ COMPANY POSITIONING FOR THE FUTURE 品质保证
- ▶ 超强的液压及电控系统设计团队
- ▶ 快速的交货期
- ▶ 完善的质量管理体系和售后服务体系

公司资质及合作伙伴 QUALIFICATION AND PARTNERS

合作伙伴
Partner

YUKEN

电子产品代理商
Agent of Electronics

ifm electronic

橡胶软管代理商
Agent of Rubber Hoses

ALFAGOMMA

快速接头代理商
Agent of Quick Couplings

dnp

OEM客户
OEM Customer

Parker

过滤器代理商
Agent of Filters

MP FILTRI



厂区简介 FACTORY INTRODUCTION

The factory of **ROKEN HYDRO-TECH** is located in the Industry Park of Shanghai Automobile City that is 15 kilometers away from Shanghai Hongqiao International Airport and High-speed Railway Hongqiao Station with convenient transportation. There are independent workshop and warehouse in the factory including sheet metal processing workshop of 1600 sq.m, metal processing and hydraulic assembly and test workshop of 900 sq.m and warehouse of 500 sq.m.

Equipments: Our factory modernization programme is ongoing. We have complete series of advanced production equipments from home and abroad such as steel plate processing equipments, welding and cutting equipments, mechanical processing equipments, hydraulic hose assembly processing equipments, steel pipe processing equipments and hydraulic system testing equipments.

Human resources: We have experienced sales personnel and well developed team of design, production, development, and technical service specialists including senior hydraulic engineers, structural engineers, hydraulic system application engineers, electrical appliance and software programming engineers and senior technicians.

Advantages:

- ▶ Hydraulic systems are all finish manufactured according to the standards of PARKER and YUKEN. Each product is a classic.
- ▶ Inventory of imported hydraulic components and accessories of various brands, such as PARKER, YUKEN, REXROTH, ATOS, etc.
- ▶ Quality guarantee from COMPANY POSITIONING FOR THE FUTURE
- ▶ Strong design team of hydraulic systems and electrical control systems
- ▶ Fast delivery time
- ▶ Perfect quality management system and after-sale service system

RM-e 型标准液压装置

Standard Hydraulic Power Units RM-e Pack



德国 DIN 标准液压站

DIN Standard Hydraulic Power Units

全系列油箱及附件按 DIN 标准尺寸制作。
All series of tanks and accessories are manufactured according to DIN standard dimensions.



泄压及安全阀模块
Module of decompression
and safety valves



SIEMENS 品牌电机
SIEMENS Motor

RM 型标准液压装置

RM-e 型标准液压装置

RA 型标准液压装置

ROKEN 的标准液压装置，是适应时代要求而开发的省资源、节能、低噪声产品。

追求使用方便，具备有丰富的品种，使用户能根据自己的需要来选定型号。

- 低噪声
装载低噪声的变量柱塞泵、变量叶片泵，同时在油箱的构造和配管等方面考虑的很周到，所以噪声低，运转时音质良好。
- 节能、发热量小
由于采用了高效率的压力补偿型变量柱塞泵，功率损耗少，所以能节约电力。

- 丰富的品种
为了能使你选择最合适的产品，将泵、油箱的容积和电机功率组成29种不同的型号，备有基础板等21种任选。
- 全品种、带有压力调节螺钉
全品种、带有流量调节螺钉
- 交货期短
因采用了标准化的装置，交货期短。
- 控制回路的组成很容易
因为按需要可安装叠加阀，所以能很容易地组成各种回路。



Standard Hydraulic Power Units **RM Pack**

Standard Hydraulic Power Units **RM-e Pack**

Standard Hydraulic Power Units **RA Pack**

ROKEN standard hydraulic power units are the products of energy-saving and low noise that developed according to the requirement of the times. Easy to use and wide assortment of models so that the customer could choose the model according to their demands.

•Low Noise

Low Noise Hydraulic Power Units feature structure-borne sound decoupling with reasonable oil tank and piping structures and low-noise variable displacement piston pump and vane pump so that no significant sound is emitted.

•Energy Saving

Substantial energy saving of hydraulic units has been achieved by equipped with a high-efficiency variable displacement piston pump of pressure compensation type.

•Wide assortment of models

A total of 29 models are available according to the combination of the built-in pump, the reservoir capacity, and the motor output, so that the most suitable model can be selected.

• Short-term delivery

Use of standardized devices to shorten the delivery time.

•Facilitating the configuration of the control circuit

With 21 different options (incorporating a base plate, etc.), any hydraulic circuit can be easily configured by stacking the modular valves.





上海工程技术大学高频
比例伺服系统
High-frequency Proportional
Servo Systems



比例液压系统
Proportional Hydraulic Systems





上海重型机器厂扩管涨型机液压系统 Hydraulic systems for pipe expanding machine

油箱容积：7000L
系统流量：2000L/min
系统压力：28MPa

Reservoir Capacity: 7000L
System Flow: 2000L/min
System Pressure: 28MPa



卡特彼勒液压缸测试系统 Test Systems for Caterpillar Cylinder

伺服阀流量：150L/min 系统压力：42MPa
系统总功率：100KW 过滤器精度：3μm

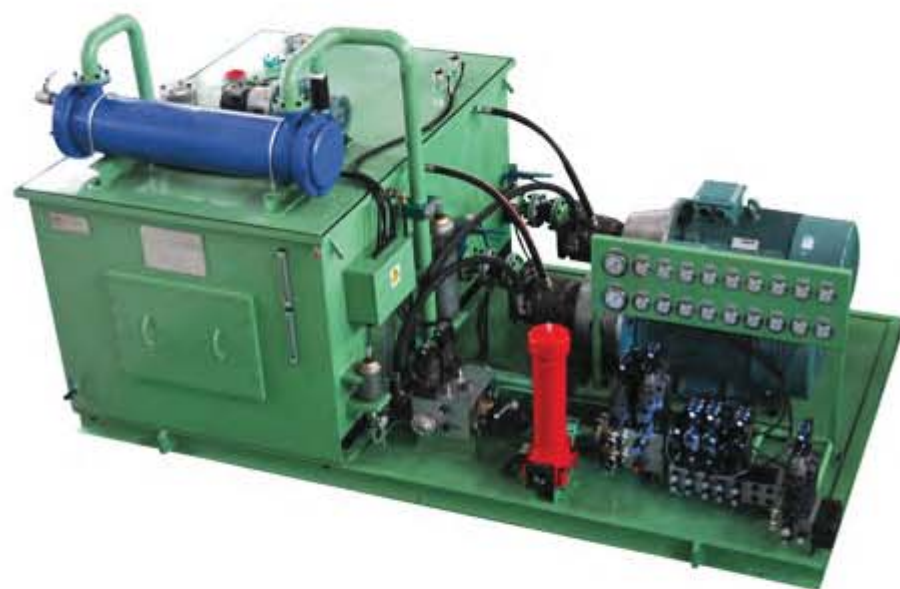
Flow of Servo Valve: 150L/min
System Pressure: 42MPa
Total Output: 100KW
Precision of Filter: 3μm





高压钢瓶收颈生产线液压站

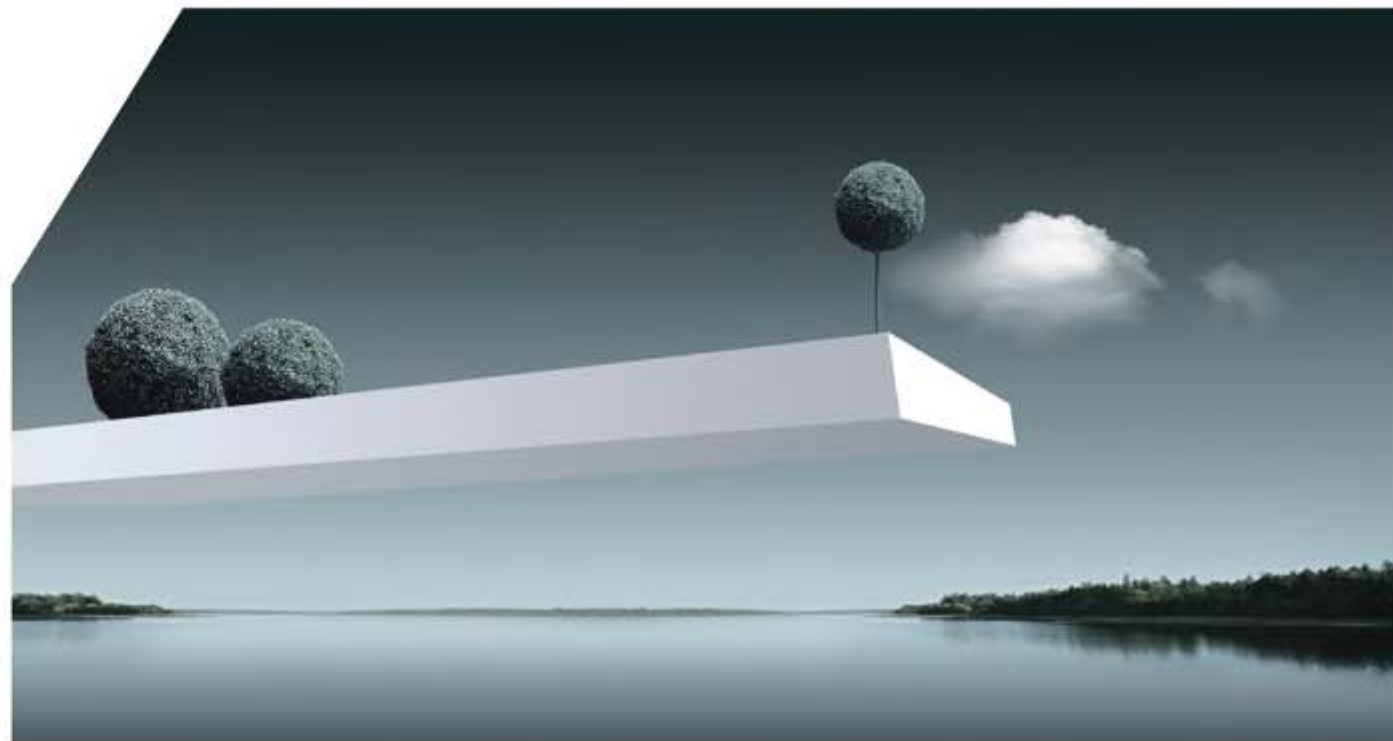
Hydraulic stations for the production line of high-pressure steel bottle necking-in



开平机液压系统

Hydraulic systems for straightening machine





高压热压机液压系统

Hydraulic systems for high-pressure hot press machine

电子电路板层压机液压站

Hydraulic stations for circuit board laminating machine





● 水乙二醇铝轮毂压铸液压系统
Hydraulic system for water-glycol
aluminum hubs casting



● 指示仪表特写
Indicating Instrument



● 循环泵组及阀组
Circulating Pump Group
and Valve Block



汽车行业液压系统

Hydraulic system for automotive industry

- 发动机试验设备配润滑及冷却系统
- 齿轮箱试验设备配润滑及冷却系统
- 变速箱试验设备配润滑及冷却系统
- 汽车铝轮毂压铸设备液压系统
- 汽车发动机铝铸件加工液压系统
- 汽车减震器压合设备液压系统



● 系统局部特写
Partial features of the
System



● 系统局部特写
Partial features of the
System

- Lubricating and cooling systems for engine testing equipment
- Lubricating and cooling systems for gearbox testing equipment
- Lubrication and cooling systems for transmission case testing equipment
- Hydraulic systems for die-casting equipment of automotive aluminum hubs
- Hydraulic systems for aluminum castings processing of automobile engine
- Hydraulic systems for the pressing machine of automobile absorber



● 汽车喷漆生产线液压泵站
Hydraulic pump station of the production
line of automobile spray painting

汽车行业配套液压站

Hydraulic stations for automotive industry





港口机械-克令吊液压系统

Port machinery-- hydraulic systems for ship crane

- 克令吊液压系统
- 龙门吊液压系统
- 堆料机液压系统
- 抓斗液压系统
- Hydraulic systems for ship crane
- Hydraulic systems for gantry crane
- Stacker hydraulic systems
- Grab hydraulic systems



• 上重高压纯水试验装置
High-pressure pure water testing device

高压水系统

High-pressure water systems

- 流量可至60L/min
- 压力可至25MPa
- Flow up to 60L/min
- Pressure up to 25MPa

船舶液压站

Hydraulic stations for shipping industry





泵和阀组一用一备
Pump and valve group
(one use, one backup)



独立的液压阀块组
Independent valve block

船用液压系统

Hydraulic systems for shipping industry



内部阀组件
Internal valve block

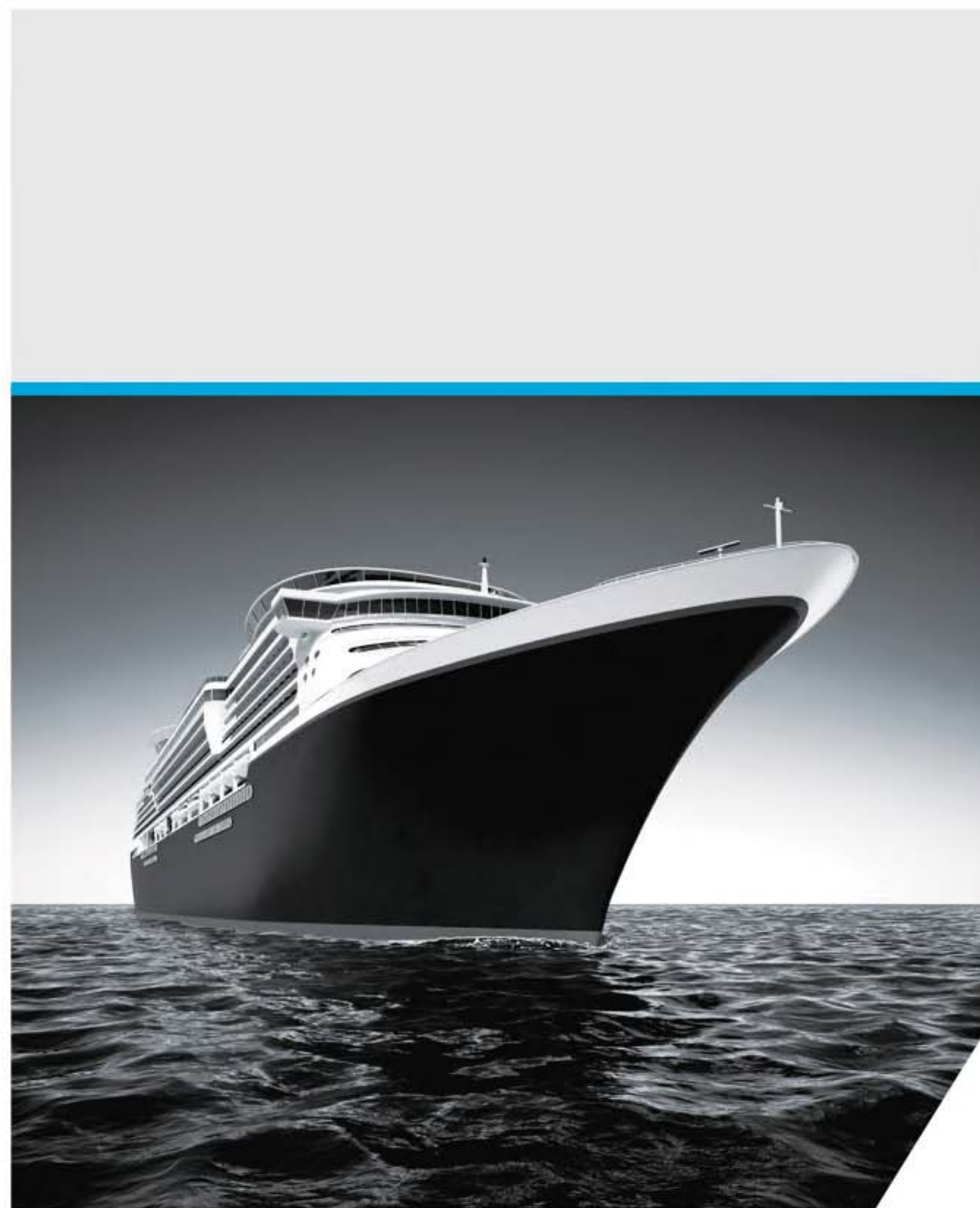


泵电机组
Pump and motor group



中船七一一研究所试验装置

Test devices for 711 Research Institute of CSIC





组合机床液压站

Hydraulic stations for combined machine tool



轮胎硫化机液压站

Hydraulic stations for tire vulcanizing machine





液压动力单元 Hydraulic power units



● 各类品牌阀可选
All kinds of brand valves can be selected



● 液压阀扩展单元
Extension unit of hydraulic valves



SONY 配套液压站 Hydraulic stations for SONY



液压测试装置

Hydraulic testing devices

- 可按用户要求订制
Customized according to the customer's requirements



测量仪表
Measuring instruments



电器控制
Electrical control



内部液压组件
Internal hydraulic package



电器操作面板
Operation panel of electrical appliances



同济大学液压测试装置
Hydraulic testing devices for Tongji University



德国宝峨(Bauer)工程机械液压测试装置
Hydraulic testing devices for engineering machinery of Bauer, Germany



仪表及电器操作面板
Operation panel of instruments and electrical appliances



正在测试的液压阀
Hydraulic valve that being tested

液压元件测试台

Test benches for hydraulic components

- Test benches for hydraulic valve
- Test benches for hydraulic pump
- Test benches for hydraulic motor
- Test benches for hydraulic cylinder
- Complete solutions for hydraulic testing and electrical control
- 液压阀测试台
- 液压泵测试台
- 液压马达测试台
- 液压缸测试台
- 液压测试及电控全套解决方案





冶金液压站

Hydraulic stations for metallurgical industry





环卫行业液压系统

Hydraulic systems for environmental sanitation industry

- 垃圾焚烧炉成套液压系统
- 大型垃圾中转站配套液压系统
- 一体式垃圾中转站及配套液压系统
- 垂直式垃圾中转站配套液压系统
- Complete hydraulic systems for refuse incinerator
- Hydraulic systems for large-scale refuse transfer station
- Hydraulic systems for integrated refuse transfer station
- Hydraulic systems for vertical refuse transfer station



• 一体式液压系统
Integrated hydraulic systems



中集配套液压站

Hydraulic stations for CIMC (China International Marine Containers (Group) Ltd.)





● 炼钢实景
Scene of Steel-making



● 炼钢实景
Scene of Steel-making

新日本钢铁出口冶金液压系统 **SPCO**

SPCO metallurgical hydraulic systems exported to Nippon Steel Corporation



3500吨全自动汽车薄板冲压生产线

3500 tons automatic press production lines for automobile sheet metal



德国REIS机器人公司配套液压系统 Hydraulic systems for REIS robot



系统局部特写
Partial features of the system



系统局部特写
Partial features of the system



系统局部特写
Partial features of the system



系统局部特写
Partial features of the system

美国英格索兰液压测试系统Ingersoll Rand Test systems for Ingersoll Rand





● 系统局部特写
Partial features of the system



● 系统局部特写
Partial features of the system

电器控制系统 Electrical control systems

根据用户需求，提供先进的电液集成智能化控制

- 集成PLC或PC控制系统
- 变频控制系统
- 伺服系统控制
- SCADAS监控系统（远程监控）
- 生产、安装、调试
- 维护和服务
- 软件

Providing advanced integrated electric-hydraulic intelligent control according to the customer's demands

- Integrated PLC or PC control system
- Frequency conversion control system
- Servo control system
- SCADAS monitoring system (remote monitoring)
- Production, installation and testing
- Maintenance and service
- Software





ROKEN provides various types of hydraulic cylinders that bore 28-1000, stroke under 12m and working pressure within 35 MPa, and also can design non-standard hydraulic cylinders or manufacture according to the drawing provided by the customers. Providing piston accumulators that gas capacity 1.0-39L, working pressure within 17MPa, also non-standard of working pressure within 35 MPa.

- Heavy-duty hydraulic cylinders Series CD250/CD350
- Vehicle hydraulic cylinders Series DG
- Engineering hydraulic cylinders Series HSG
- Metallurgical hydraulic cylinders Series Y-HG
- Four rods hydraulic cylinders
- Compact hydraulic cylinders
- Oscillating hydraulic cylinders
- Special purpose hydraulic cylinders
- Piston accumulators



车辆用液压缸DG系列
Vehicle hydraulic cylinders Series DG



冶金用液压缸Y-HG系列
Metallurgical hydraulic cylinders Series Y-HG



薄型液压缸CYB系列
Compact hydraulic cylinders Series CYB

液压缸 Hydraulic cylinders

ROKEN公司提供缸径 $\Phi 28\sim\Phi 1000$ 、行程12m以下内、工作压力35MPa以内的各类型液压缸，也可为用户设计非标液压缸或按用户提供图纸生产。提供气体容量1.0~39L、工作压力17MPa内的活塞式蓄能器，也可为用户提供工作压力35MPa以内的非标活塞式蓄能器。

- 重载型液压缸CD250/CD350系列
- 车辆用液压缸DG系列
- 工程用液压缸HSG系列
- 冶金用液压缸Y-HG系列
- 四拉杆液压缸
- 薄型液压缸
- 摆动缸
- 特殊用途液压缸
- 活塞式蓄能器



工程用液压缸HSG系列
Engineering hydraulic cylinders Series HSG



四拉杆液压缸CJT系列
Four rods hydraulic cylinders Series CJT



特殊用途液压缸
Special purpose hydraulic cylinders



液压集成阀组件 Hydraulic manifolds

- RMC 系列安装板的装配面符合 **ISO 4401** 和 **CETOP RP121H** 标准
- 可根据液压回路，叠装叠加阀和电磁换向阀
- 适用液压系统的多样化和合理性而不用管道连接
- 最多可叠加10组叠加阀和电磁换向阀
- 可水平或垂直安装
- 环境温度：-20℃~+70℃
- 介质：液压油，符合 **DIN 51524...535** 标准，用其它介质和我们技术部联系
- 介质清洁度：符合 **ISO 19/16**，建议用 **25μm, β25 ≥75** 的进油过滤器
- 可按用户要求订制
- Fitting surface of series RMC mounting panel is accord with the standard of **ISO 4401** and **CETOP RP121H**
- Stacking the modular valves and solenoid directional valves up to 10 sets according to the different hydraulic circuit
- Not connected by pipeline to realize the variety and rationality of the systems
- Mounted vertically or horizontally
- Working temperature: -20℃~+70℃
- Medium: hydraulic oil that is accord with **DIN 51524...535**. If want to use other medium, please contact the technical department
- Cleanliness of medium: Be accord with **ISO 19/16**. Inlet filter of **25μm, β25 ≥75** is usually recommended
- Customized according to the customer's requirements

中国南极科考队低温加油泵站和雪橇

Refueling pump stations under the low temperature and sledges for Chinese Antarctic Scientific Expedition



雪橇滑履发运
Dispatch of sledge slipper



局部特写
Partial features:



- Manufacturing refueling pump stations under the low temperature for Chinese Antarctic Scientific Expedition
- Manufacturing sledges for Chinese Antarctic Scientific Expedition
- Manufacturing structural houses, equipments and appliances for Deep Ice Core Drilling Site of Kunlun Station of Chinese Antarctic Scientific Expedition

- 为中国南极科学考察队制作低温工况加油泵站
- 为中国南极科学考察队制作雪橇
- 为中国南极科学考察队昆仑站深冰芯钻探场地制作结构房屋及设备器材



南极实地应用图片
Site application



南极实地应用图片
Site application



加油装置卷轴
Reel of refueling device



低温加油泵
Refueling pump under the low temperature

辅件 Accessories

铸铁钟型罩

铸铁钟型罩用于连接IEC标准电机和液压泵，我公司提供的铸铁钟型罩有如下特点：

- 钟型罩材料采用球墨铸铁，柔性好
- 两端连接法兰均经机加工，可连接ISO标准安装尺寸的液压泵，备有大量库存
- 电机轴和液压泵轴自动对中
- 可用于重负荷
- 用户订货时，只需提供电机和液压泵的型号即可

铝质钟型罩

铝质钟型罩用于连接IEC标准电机和液压泵，我公司提供的铝质钟型罩有如下特点：

- 库存有各种规格的钟罩，适用于各种液压泵
- 两端连接法兰均经机加工
- 电机轴和泵轴自动对中
- 可用于重负荷
- 大多数钟罩可叠放

ROTEX 联轴器、梅花联轴器

- 钢制轴套，特别适合高载荷的驱动单元
- 扭向弹性、免维护
- 轴向插入式安装
- 吸收振动
- 失效保护
- 良好的动态特性
- 设计紧凑、惯性小
- 表面磷化处理

管接头及法兰接头

符合SAE J518/ISO6162 OR JB/ZQ4187-97 标准

Cast Iron Bellhousings

Used as the links between IEC motor and pump. Features:

- Made of nodular cast iron with fine flexibility.
- Both flange sides are finish machined and can connect the hydraulic pump with the ISO standard installation dimensions.
- For almost every bellhousing either available from stock or in short term
- Motor and pump shaft centered
- Designed for high loads
- When ordering, only need to provide the model of motor and hydraulic pump.

Aluminum Bellhousings

Used as the links between IEC motor and hydraulic pump. Features:

- All types are available from stock and suitable for all kinds of hydraulic pumps
- Both flange sides are finish machined
- Motor and pump shaft centered
- Designed for high loads
- In many cases ROKEN bellhousings can be piled up

ROTEX couplings & plum couplings

- Designed for driving unit of high load with steel shaft sleeve
- Torsionally flexible--maintenance free
- Axial plug-in - easy assembly
- Absorbing shocks
- Fail-safe
- Good dynamical features
- Compact and low mass moments of inertia
- Surface phosphating process

Pipe couplings and flange couplings

In line with SAE J518/ISO6162 OR JB/ZQ4187-91



• 钟型罩
Bellhousings



• 联轴器
Couplings



• 管接头及法兰接头
Pipe couplings and flange couplings.





上海柔肯液压科技有限公司从企业生产成套液压系统以来，为各行各业提供了数千套高技术含量的液压系统，其中我们引为骄傲的有：

公司业绩：

上海重型机器厂扩管液压机液压系统、25MPa高压水压系统等项目
上海大众汽车公司锡齿机液压系统国产化项目
上海锅炉厂弯臂机改造项目
上海隧道股份盾构机维护及液压元件的配套
上海同济大学液压实验动力站项目
上海工程技术大学高频比例液压及电气控制试验装置
上海红双喜股份配套液压及电气控制系统
上海中曼石油设备大型石油钻机的液压系统、液压管线长期配套
上海博沃重工矿山机械液压系统及液压缸的配套

中国极地研究中心南极科考队内陆考察雪地车加油系统及雪橇设备的制造
中船七一研究所集中液压动力站项目
中国航天第八零三研究所集中电气液压试验装置
核工业福清核电站钢门启闭液压系统的配套
海军舰艇侧推装置液压系统配套项目
宝钢集团上钢五厂的液压系统配套项目
宝钢集团防腐设备流水线液压系统的配套项目
大连特钢大型工业炉液压系统配套项目
一汽大众公司集中液压动力站配套
江淮汽车公司集中液压动力站配套
长安汽车公司发动机冷灌性试验液压系统配套
奇瑞轿车公司发动机试验台的液压系统配套项目
奇瑞轿车公司变速箱试验台的液压系统配套项目
奇瑞轿车公司汽车减震器压合设备的液压系统配套项目
三一机械减速机测试系统的配套

美国PARKER公司的液压油管长期制作
美国3M公司液压缸项目
美国Granco Clark公司液压系统的配套
美国Robbins公司盾构机液压站的配套
美国GE公司电气液压试验系统的配套
美国Cummins公司液压系统的配套
美国Cat公司油缸测试系统及减速机测试系统的配套
美国ITW (蒂工) 集团液压系统的配套
美国SAPA热熟传输公司钢材生产线液压系统的配套

日本YUKEN公司的液压站OEM代工
日本Ikuta公司钢带生产线的集中冷却、调温站配套项目
日本TOTO公司的炉后送料设备配套液压系统
日本NGK公司液压系统的配套
日本TOYO公司液压系统的配套
日本SONY公司液压系统的配套
日本NIDEC公司液压系统的配套

德国BASF公司液压系统改造项目及配套
德国VAG公司比例伺服液压及电气控制试验台
德国Bauer公司液压及电气控制试验台
德国BHS公司液压系统的配套
德国Erling-klinger公司机械结构、液压及电气控制系统的制作
德国Koester公司液压系统的配套
德国BURKLE公司液压系统的配套
德国BEKAERT公司液压系统

韩国KOINS公司液压系统的配套
马来西亚Pengenda公司液压系统的配套
瑞士SAK公司组合机床液压系统的配套
台湾汽车铝轮压机液压比例系统的配套
出口新加坡GN公司的10T/30m船用液压充令吊机的液压系统配套
出口新加坡GN公司的30T/35m船用液压充令吊机的液压系统配套

卫华港机堆料机液压系统及液压缸的配套
港口轮胎吊机液压系统及液压缸配套项目
港口30T、35T液压抓斗液压系统及液压缸的配套
昊威光电太阳能设备液压系统的配套
深圳垃圾焚烧处理液压系统项目
柳州西門厂液压启闭机液压系统的配套
联合压铸热压机比例液压系统的配套
北京奥体公园垃圾压缩站液压及电控系统的配套
深圳宝安区100套移动一体式垃圾处理站配套液压及电气控制系统
沈阳65套移动一体式垃圾处理站配套液压及电气自动控制系统
大连45套移动一体式垃圾处理站配套液压及电气自动控制系统
西安20套大型垃圾中转站配套液压及电气自动控制系统
武汉28套大型垃圾中转站配套液压及电气自动控制系统
重庆大型垃圾中转站（日处理500T）配套比例液压及电气自动控制系统

ROKEN HYDRO-TECH has provided thousands of sets of high-tech hydraulic systems for various industry since it founded. Among these, the followings are that we are proud of:

BRAND CUSTOMERS:

Shanghai Heavy Machinery Factory Co., Ltd.
Shanghai Volkswagen Co., Ltd.
Shanghai Boiler Factory Co., Ltd.
Shanghai Tunnel Engineering Co., Ltd.
Shanghai Tongji University
Shanghai University of Engineering Science
Shanghai Double Happiness Co., Ltd.
Zhongman Petroleum Equipment (Shanghai) Co., Ltd.
Shanghai Vipeak Heavy Machinery Co., Ltd.

Antarctic Scientific Expedition of Polar Research Institute of China
711 Research Institute of the CSIC
No.803 Research Institute of China Aerospace Science and Technology Corporation
Fuqing Power Station of China National Nuclear Corporation
Naval Submarine
Shanghai No.5 Steel Plant of Baosteel Group Corporation
Baosteel Group Corporation
Dalian Special Steel Co., Ltd.
China FAW Group Corporation
China Anhui Jianghuai Automobile Co., Ltd.
Changan Automobile Co., Ltd.
CHERY Automobile Co., Ltd.
SANY Group

USA

Parker Hannifin Corporation
Minnesota Mining and Manufacturing Company
Granco Clark
The Robbins Company
General Electric Company
Cummins Inc.
Caterpillar Inc.
Illinois Tool Works Inc.
SAPA Heat Transfer Co., Ltd.

Japan

YUKEN Kogyo Co., Ltd.
IKUTA Corporation
TOTO LTD.
NJK Corporation
TOYO Corporation
SONY Corporation
NIDEC Corporation

Germany

BASF SE
VAG-Armaturen GmbH
Bauer Group
BHS Corrugated
ErlingKlinger AG
Robert Bürkle GmbH
BEKAERT Group

Other countries

KOINS, Korea
Pengenda Croup, Malaysia
SAK, Switzerland
GN Corporation, Singapore